



New Music Concerts
157 Carlton Street, Suite 203
Toronto ON M5A 2K3

NEW MUSIC CONCERTS



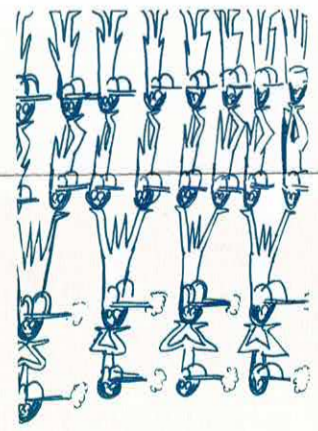
2015-2016 Season
Robert Aitken artistic director



New Music Concerts gratefully acknowledges the support of: The Canada Council for the Arts • Canadian Heritage • The SOCAN Foundation • The Mary-Margaret Webb Foundation • The Koerner Foundation • The McLean Foundation • The Toronto Arts Council • The Ontario Arts Council • The Amphion Foundation

Call NMC @ 416.961.9594 | Fax 416.961.9508 | nmc@interlog.com | Repertoire, dates and artists subject to change. Full details @ www.NewMusicConcerts.com
Single Tickets for NMC events: \$35 regular | \$25 seniors / arts workers | \$10 student [Call 416.366.7723 for January 14 single ticket prices]
Subscriptions (7 events) \$170 regular | \$105 seniors / arts | \$35 student | **Pick 3** (or more) each \$28 regular | \$18 seniors / arts | \$8 student [Prices include 13% HST]

Canadian composer | Canadian premiere | World premiere | NMC commission



Flutes & More!

Sunday April 24, 2016

NMC Flute Orchestra (24 players) | **David Hetherington** cello | **Robert Aitken** direction
 Introduction 7:15 | Concert 8:00 | Saint Luke's United Church, 353 Sherbourne St.

Robert Aitken (Canada 1939) - *Isumami and Solesmes* (2009); *Caracas* (2016) (N) (2016)

Bruce Mather (Canada 1939) - *Hors Piste - Off Track* (2010) (2010)

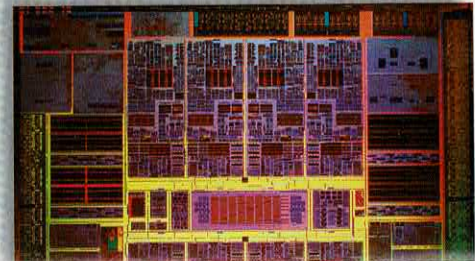
Alex Pauk (Canada 1945) - *New Work* (2016) (2016)

Christopher Butterfield (Canada 1952) - *Bosquet* (2010) (2010)

Illustrations: R. Murray Schaffer



Aitken performs his own compositions



NMC Ensemble | **Robert Aitken** direction
 Introduction 7:15 | Concert 8:00 | Betty Oliphant Theatre, 404 Jarvis Street

Anthony Tan (Canada 1978) - *On the Sensations of Tone II* (2016) (N) (2016)

Keith Hamel (Canada 1956) - *New Work* (2016) (2016)

So Jeong Ahn (S.Korea/Canada 1956) - *LOL-a* (2012/2015) (2015)

Paul Steenhuisen (Canada 1965) - *ATOM TYPE OPAL MELT* (2016) (2016)

NEW MUSIC CONCERTS

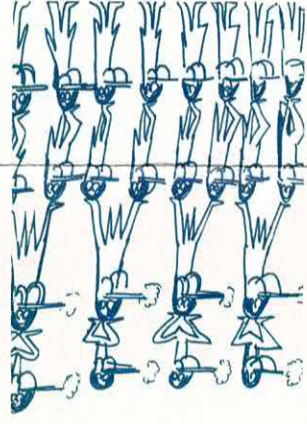


2015-2016 Season
Robert Aitken artistic director



New Music Concerts gratefully acknowledges the support of: The Canada Council for the Arts • Canadian Heritage • The SOCAN Foundation • The Mary-Margaret Webb Foundation • The Koerner Foundation • The McLean Foundation • The Ontario Arts Council • The Amphion Foundation • The Toronto Arts Council • The Ontario Arts Council
 (Call NMC @ 416.961.9594 | fax 416.961.9508 | nmc@interlog.com | Repertoire, dates and artists subject to change. Full details @ www.NewMusicConcerts.com)
Single Tickets for NMC events: \$35 regular | \$25 seniors / arts workers | \$10 student [Call 416.366.7723 for January 14 single ticket prices]
Subscriptions (7 events) \$170 regular | \$105 seniors / arts | \$55 student | **Pick 3** (or more) each \$28 regular | \$18 seniors / arts | \$8 student [Prices include 13% HST]

Canadian composer | Canadian premiere | World premiere | NMC commission



Flutes & More!

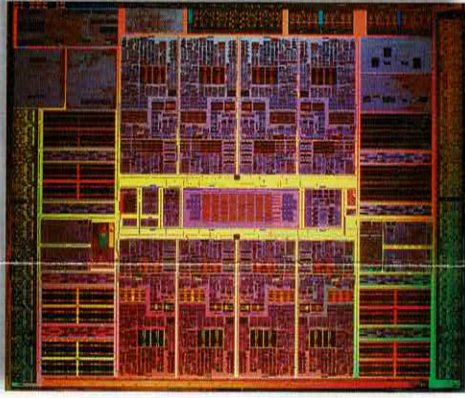
Sunday April 24, 2016
 NMC Flute Orchestra (24 players) | David Hetherington cello | Robert Aitken direction
 Introduction 7:15 | Concert 8:00 | Saint Luke's United Church, 353 Sherbourne St.

- Robert Aitken (Canada 1939) - *Sunami and Solesmes* (2009); *Caracas* (2016)
- Bruce Mather (Canada 1939) - *Hors Piste - Off Track* (2010)
- Alex Pauk (Canada 1945) - *New Work* (2016)
- Christopher Butterfield (Canada 1952) - *Bosquet* (2010)

Illustrations: R. Murray Schafer



Aitken performs his own compositions



www.musicconcerts.com

Sunday April 3, 2016
 NMC Ensemble | Robert Aitken direction
 Introduction 7:15 | Concert 8:00 | Betty Oliphant Theatre, 404 Jarvis Street

- Anthony Tan (Canada 1978) - *On the Sensations of Tone II* (2016)
- Keith Hamel (Canada 1956) - *New Work* (2016)
- So Jeong Ahn (S.Korea/Canada 1956) - *LOT-a* (2012/2015)
- Paul Steenhuisen (Canada 1965) - *ATOM TYPE OPAL MELT* (2016)

QUARTET SAXOPHONE QUARTET

Sunday March 13, 2016 | Co-presented with The Music Gallery, 197 John Street
 Introduction 7:15 | Concert 8:00

- Jean-François Laporte (Canada 1968) - *Incantation* (2011)
- Jimmie LeBlanc (Canada 1977) - *Fil Rouge* (2012)
- Wolf Edwards (Canada 1972) - *Predator Drone MQ-1* (2013-14)
- André Hamel (Canada 1955) - *Brumes matinales et textures urbaines* (2007)
- Pierre Alexandre Tremblay (Canada 1975) - *Les pâleurs de la lune* (2014)



Photo: François Morin



photo: David Cooper

Turning Point Ensemble

Turning Point Ensemble | Owen Underhill director | Saturday October 17, 2015

Introduction 7:15 | Concert 8:00 | Betty Oliphant Theatre, 404 Jarvis Street

Ana Sokolović 🇨🇦 (Serbia/Canada 1968) - ... and I need a room to receive 5000 people... (2014)

Jocelyn Morlock 🇨🇦 (Canada 1969) - Luft Suite (2011/15)

Dorothy Chang 🇨🇦 (USA/Canada 1970) - Three Windows (2011)

Linda Catlin Smith 🇨🇦 (USA/Canada 1957) - Gold Leaf (2010)

Alexina Louie 🇨🇦 (Canada 1949) - A Curious Passerby At Fu's Funeral 🌍 (2015)



CENTREDISCS
CENTREDISQUES

🇨🇦 R. Murray Schafer *Loving (Toi)* CD Preview and Benefit | Sunday November 8, 2015

(non-subscription event) | Doors open @ 7:00 | Gallery 345, 345 Sorauren Ave. | RSVP 416.961.9594

Celebrating the reissue of NMC's historic recording of R. Murray Schafer's theatrical work on the Centrediscs label.

Tickets \$100 (2 for \$150) include performances, door prizes, gourmet delights and libations with proceeds to defray CD production costs. A charitable receipt will be issued for the CRA allowable portion.



photo: André Leduc

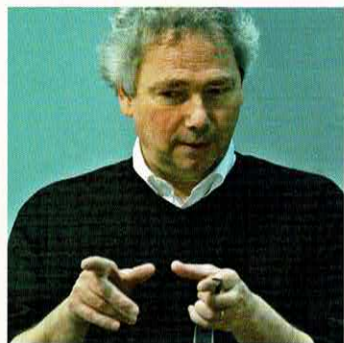


photo: Cecile Brossard

A Portrait of Philippe Leroux

Sunday December 6, 2015

NMC Ensemble | Robert Aitken direction

Introduction 7:15 | Concert 8:00 | Betty Oliphant Theatre, 404 Jarvis Street

Philippe Leroux (France 1959) - AAA (1996) and Ailes (2012)

Gérard Grisey (France 1946-1998) - Talea (1986)

Elliott Carter (USA 1908-2012) - Canon for Three Equal Instruments 🌟 (1971)

Scott Rubin (USA 1989) - New Work 🌟🌟 (2015)

JACK QUARTET

Thursday January 14, 2016

Introduction 7:15 | Concert 8:00 | Jane Mallett Theatre, 27 Front Street East

John Luther Adams (USA 1953) - The Wind in High Places (2012)

John Zorn (USA 1953) - The Alchemist (2013)

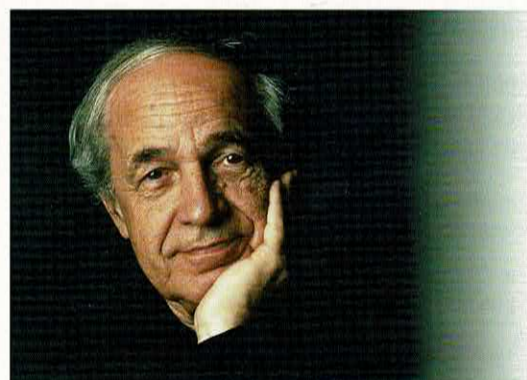
Christopher Otto (USA 1983) - Rodericus, Angelorum Psalat (2012)

Iannis Xenakis (Greece/France 1922-2001) - Tetras (1983)

Co-production with Music Toronto | for single ticket prices call 416.366.7723



photo: Henrik Olund



Boulez and Bashaw

Monday February 15, 2016

NMC Ensemble | Robert Aitken direction

Introduction 7:15 | Concert 8:00 | Betty Oliphant Theatre, 404 Jarvis Street

Pierre Boulez (France 1925) - Incises (1994/2001)

Boulez - Sur Incises (1996/2006)

Howard Bashaw 🇨🇦 (Canada 1957) - Postmodern Counterpoint -

Antiphonals and Canons with Gabrieli Remembered 🌟🌟 (2015)

Cover image and brochure design: Daniel Foley 🇨🇦 Canadian composer | 🌟 Canadian premiere | 🌟 World premiere | 🌟 New Music Concerts commission

Each year I approach this brochure statement with apprehension as I am never quite sure where this little paragraph will take me. After 44 seasons, we can look back and attempt to assess what has been achieved and where we are going. As most of you know, I believe New Music Concerts should present challenging music. That means someone needs to be challenged – the composer, the performer or the listener, and hopefully all three. It also implies that “high art” is not just entertainment; there needs to be a deeper message. It's our job to seek out these ideas, and in many cases, foster their development through commissions. We appreciate that our devoted audience understands what we are attempting and the risks involved. Thank you for undertaking this quest with us over the past four and a half decades.

Our 2015-2016 season is a bouquet of concerts which will bloom as colourfully as the nascent rose our designer Daniel Foley has chosen for this year's brochure. Please join us and be challenged.

Yours sincerely,

Robert Aitken, founding artistic director



photo: Daniel Foley



facebook



twitter



newmusicconcerts



photo: Cedric Brossard

A Portrait of Philippe Leroux

Sunday December 6, 2015

NMC Ensemble | Robert Aitken direction

Introduction 7:15 | Concert 8:00 | Betty Oliphant Theatre, 404 Jarvis Street

Philippe Leroux (France 1959) - *AAA* (1996) and *Ailes* (2012)

Gérard Grisey (France 1946-1998) - *Talea* (1986)

Elliott Carter (USA 1908-2012) - *Canon for Three Equal Instruments* * (1971)

Scott Rubín (USA 1989) - *New Work* N (2015)

JACK QUARTET

Thursday January 14, 2016

Introduction 7:15 | Concert 8:00 | Jane Mallett Theatre, 27 Front Street East

John Luther Adams (USA 1953) - *The Wind in High Places* (2012)

John Zorn (USA 1953) - *The Alchemist* (2013)

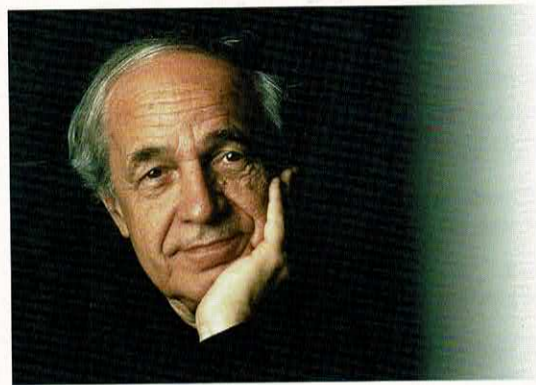
Christopher Otto (USA 1983) - *Rodericus, Angelorum Psalat* (2012)

Iannis Xenakis (Greece/France 1922-2001) - *Tetras* (1983)

Co-production with **Music Toronto** | for single ticket prices call **416.366.7723**



photo: Henrik Olund



Boulez and Bashaw

Monday February 15, 2016

NMC Ensemble | Robert Aitken direction

Introduction 7:15 | Concert 8:00 | Betty Oliphant Theatre, 404 Jarvis Street

Pierre Boulez (France 1925) - *Incises* (1994/2001)

Boulez - Sur Incises (1996/2006)

Howard Bashaw * (Canada 1957) - *Postmodern Counterpoint -*

Antiphonals and Canons with Gabrieli Remembered N (2015)

Cover image and brochure design: Daniel Foley | * Canadian composer | * Canadian premiere | * World premiere | N New Music Concerts commission

Each year I approach this brochure statement with apprehension as I am never quite sure where this little paragraph will take me. After 44 seasons, we can look back and attempt to assess what has been achieved and where we are going. As most of you know, I believe New Music Concerts should present challenging music. That means someone needs to be challenged – the composer, the performer or the listener, and hopefully all three. It also implies that “high art” is not just entertainment; there needs to be a deeper message. It’s our job to seek out these ideas, and in many cases, foster their development through commissions. We appreciate that our devoted audience understands what we are attempting and the risks involved. Thank you for undertaking this quest with us over the past four and a half decades.

Our 2015-2016 season is a bouquet of concerts which will bloom as colourfully as the nascent rose our designer Daniel Foley has chosen for this year’s brochure. Please join us and be challenged.

Yours sincerely,

Robert Aitken, founding artistic director



photo: Daniel Foley



facebook



twitter



newmusicconcerts

New Music Concerts 2015-2016 season subscription form

| | |
|---|----------------|
| <input type="checkbox"/> Full season subscription(s): (7 events) \$170 regular \$105 seniors / arts worker \$35 student | \$ _____ |
| <input type="checkbox"/> Pick 3 or more: (each concert, specify choice) \$28 regular \$18 seniors / arts worker \$8 student | \$ _____ |
| <input type="checkbox"/> Yes, I would like to start the season right with a charitable donation of: | \$ _____ |
| Payment may be made by VISA, Mastercard or personal cheque. Prices include 13% HST. | TOTAL \$ _____ |

Card #: _____ Expiry: _____

Name on card: _____ Signature: _____

Subscribers receive an informative newsletter in advance of each event. Please provide your address below to be added to our mailing list:

Name: _____ City: _____

Street: _____ Postal code: _____

e-mail address: _____

Please make cheques payable to:

New Music Concerts • 157 Carlton Street • Suite 203 • Toronto, Ontario • M5A 2K3 • 416.961.9594 • fax 416.961.9508
New Music Concerts is a registered Canadian Charitable Organization • Number 11905 6448 RR 0001